



COMPACT ECONOMICAL THERMAL SOLUTIONS



CX Series Printers

The desktop CX thermal printers are ideal for a range of applications, including:

-  **Low Volume**
-  **Manufacturing**
-  **Shipping/Receiving**
-  **Asset Tracking**
-  **Compliance Labeling**
-  **Retail**
-  **Healthcare**

Economical Solution

The CX Series offers a low-cost printing solution for low volume applications. Speed of 4 inches-per-second and feature rich design will satisfy a wide spectrum of requirements.

Compact Design

Designed for convenience, the CX Series offers compact design for real-estate-sensitive applications. It offers many advanced features simplifying loading and operation.

Media Capacity

The CX Series is designed to accommodate a full 5" OD roll of media, reducing downtime and simplifying operation.

Performs best with
Techno
T H E R M
Labels & Ribbons



THE BEST PERFORMING
COMPACT

SPECIFICATIONS

CX400



Out of the box ... and ready to go!

Complete with:

- Labeling Software
- Parallel Printer Cable
- Starter Roll of Media & Ribbon
- Power Supply
- User's & Programmers Guide



Memory:

2 MB DRAM
2 MB Flash ROM
4 MB or 6 MB Optional Flash

Processor:

32-BIT

Media:

Roll-fed or fan-fold, die-cut or continuous direct thermal (thermal transfer) labels, synthetics, and tag stock with or without black mark, gap, or notch.

Max. Caliper: 0.0075" (0.254 mm)
Max. Roll Diameter: 5" (127 mm)
Wind: Face-Out or Face-In

Ribbon:

Max. Roll Diameter: 1.41" (36 mm)
Min. Core Diameter: 0.75" (19 mm)
Wind: Face-Out

Sensing:

Adjustable transmissive sensor for gap.
Reflective sensor for black mark. Automatic, programmable setting of top of form. Label present sensor - optional with label dispenser.
Ribbon-out sensor

Interface:

- Serial RS232 (up to 38.4k bps)
- Centronics Parallel

Barcode Symbolologies:

Elementary: UPC-A, UPC-E, EAN-8, EAN-13, Code 39, Code 93, Code 128, Codabar, MSI, Bookland, Industrial 2/5, Interleaved 2/5, Matrix 2/5, Postnet, UCC/EAN 128
2-Dimensional: PDF417, Maxicode

Fonts:

Bitmap - 12 proportional, mono-spaced and outline fonts (Code table 858). Scalable Internal CG Triumvirate® & CG Times® fonts. Optional Downloaded TrueType® fonts, scalable from 8 to 72 points.

Barcode & Font Formatting:

360° rotation of barcodes and text, character expansion horizontally and vertically, sequential numbering, form overlay for high-speed editing of complex formats.

Graphic Support:

Printing & storage of .PCX, .BMP format, SATO Hex/binary

Software:

Windows® Drivers (Windows® 95, 98, ME, NT4.0, 2000, XP)
"Label Gallery Free" - Label Software
Printer Utilities

Electrical Requirements:

100-120VAC/200-240VAC, 50/60 Hz ($\pm 1\%$)
Agency Certifications: CE, UL, CSA, TÜV

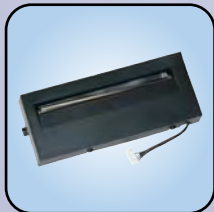
Environmental Requirements:

Operating: 40° to 100°F (4° to 38°C)
30-80% RH, non-condensing
Storage: -4° to 122°F (-20° to 50°C)
Max. 85% RH, non-condensing
ESD: 8kV

Optional Features:

Label Cutter (factory installed), Label Dispenser (factory installed), 220 V Power Supply, USB, Ethernet, Memory Expansion, Rewinder, Keyboard

CX400	
Printing Method	Thermal Transfer/Direct Thermal
Print Resolution	203 dpi (8 dpmm)
Print Speed	4 ips (100 mm/second)
Media Width	Max. 4.69" (119 mm) /Min 0.87" (22 mm)
Max. Print Width	4.1" (104 mm)
Min. Print Length	0.87" (22 mm)
Max. Print Length	45" (1143 mm)
Max. Ribbon Size	4.4" (110 mm) W x 328 ft. (100 m) L; Face-Out
Dimensions	7.76" W x 10.2" D x 6.5" H (197 mm W x 257 mm D x 164 mm H)
Weight	8.09 lbs (3.67 kg)



Cutter



Label Gallery



Keyboard



Rewinder

SATO
DCS & Labeling Worldwide

SATO America, Inc.

10350-A Nations Ford Road, Charlotte, NC 28273
Phone: (704) 644-1650 Fax: (704) 644-1659
E-mail: satosales@satoamerica.com

www.satoamerica.com